

SHERWOOD VALLEY BAND OF POMO INDIANS

SAVING THE SALMONIDS STARTS WITH YOU

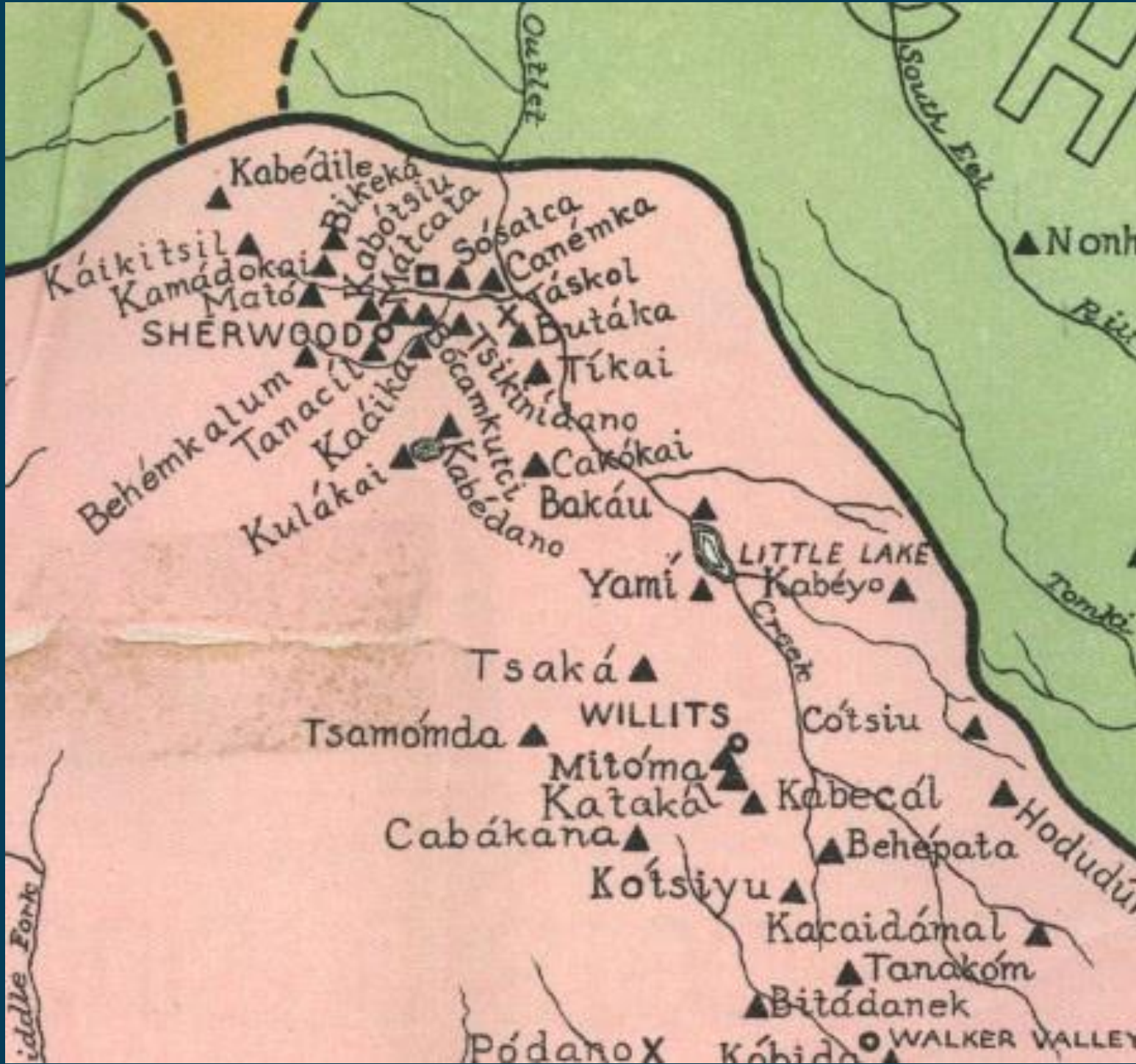
SVR Environmental Program

TRADITIONAL FOOD SOURCES

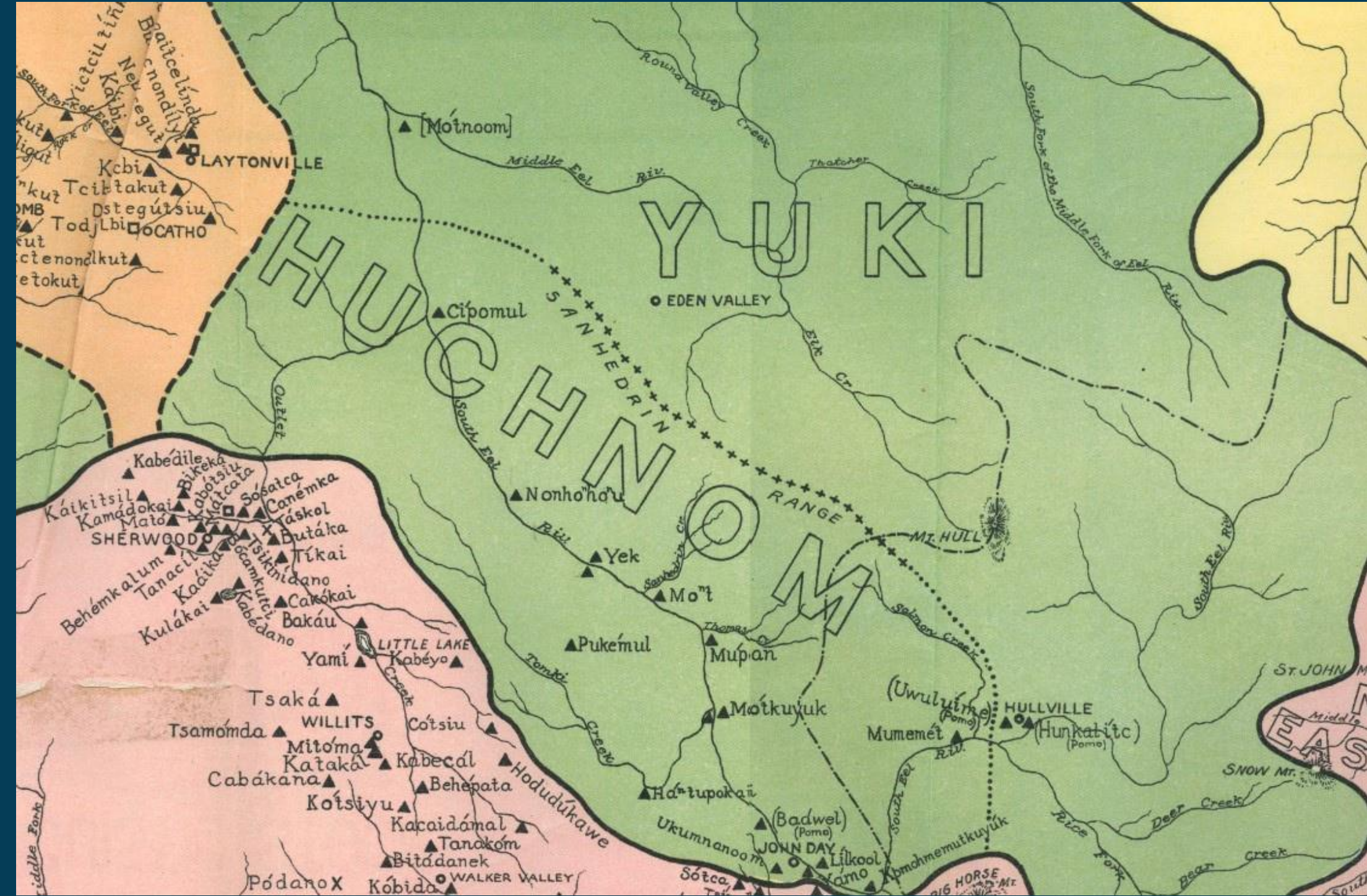
For generations, the Eel River Watershed's rushing creeks have been essential to Native Americans' way of life. The Tribal community gets food like salmon and steelhead from the water. The creeks provide water for the native plants and trees, which our ancestors shared so they can thrive and be used as food, basketry, hunting, collecting, and cooking implements. In many ways, the plants and trees are traditional medicine. The area is better protected from fire by the water. For the Indigenous people, the flow of water is very important.



TRADITIONAL TERRITORY



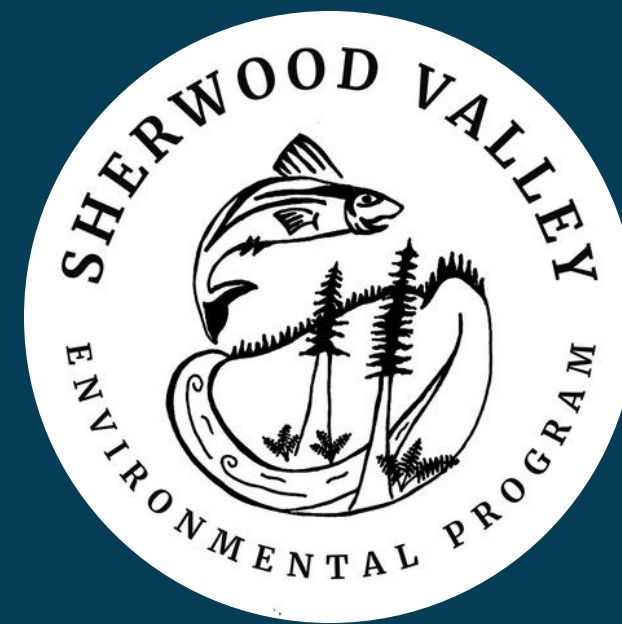
POMO VILLAGES OUTLET CREEK



TRIBAL TERRITORIES
OUTLET CREEK AND EEL RIVER

SHERWOOD VALLEY TRIBAL ENVIRONMENTAL PROGRAM

- Water Quality Monitoring
- Non Point Source Pollution BMPs
- Environmental Education
- Wildfire Prevention
- Macroinvertebrate Monitoring
- Native Plant Nursery
- Fish Passage Barrier Assessments



WATER QUALITY MONITORING ON TRIBAL LANDS



Tributaries of Outlet Creek

- Beachtel Creek
- Davis Creek
- Sherwood Creek

Parameters

- Dissolved Oxygen
- Temperature
- Turbidity
- Conductivity
- pH

Field Log

- Algae
- Foam
- Oily Sheen
- Fish presence/absence
- Macroinvertebrates

Lab Tests

- Phosphorus
- E. coli



OUTLET CREEK - MITIGATION LANDS



SEPTEMBER



NOVEMBER



OUTLET CREEK MITIGATION LANDS

Saving Salmonids from
isolated pools that dry up
in the summer



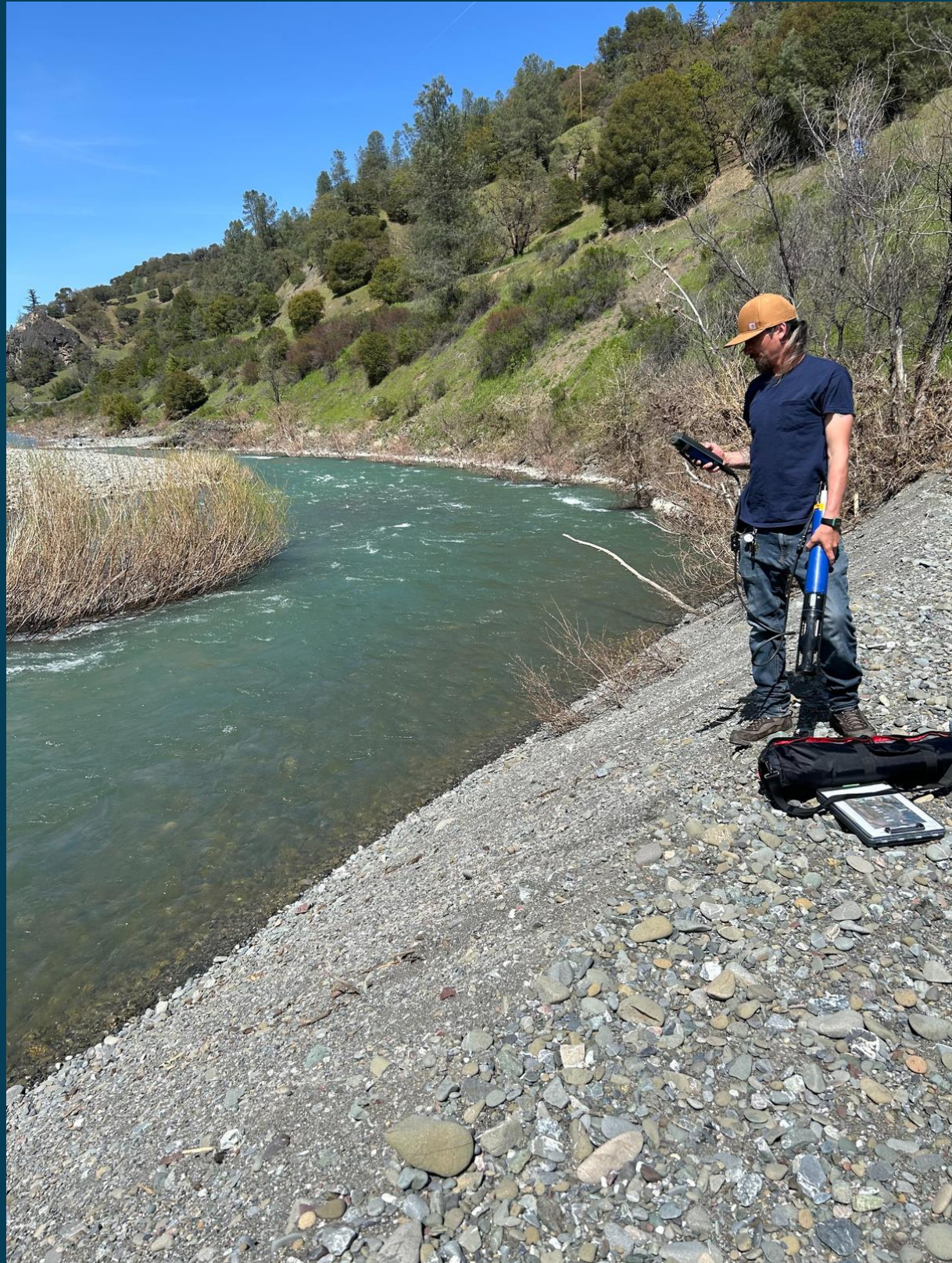


CONFLUENCE OF EEL RIVER AND OUTLET CREEK



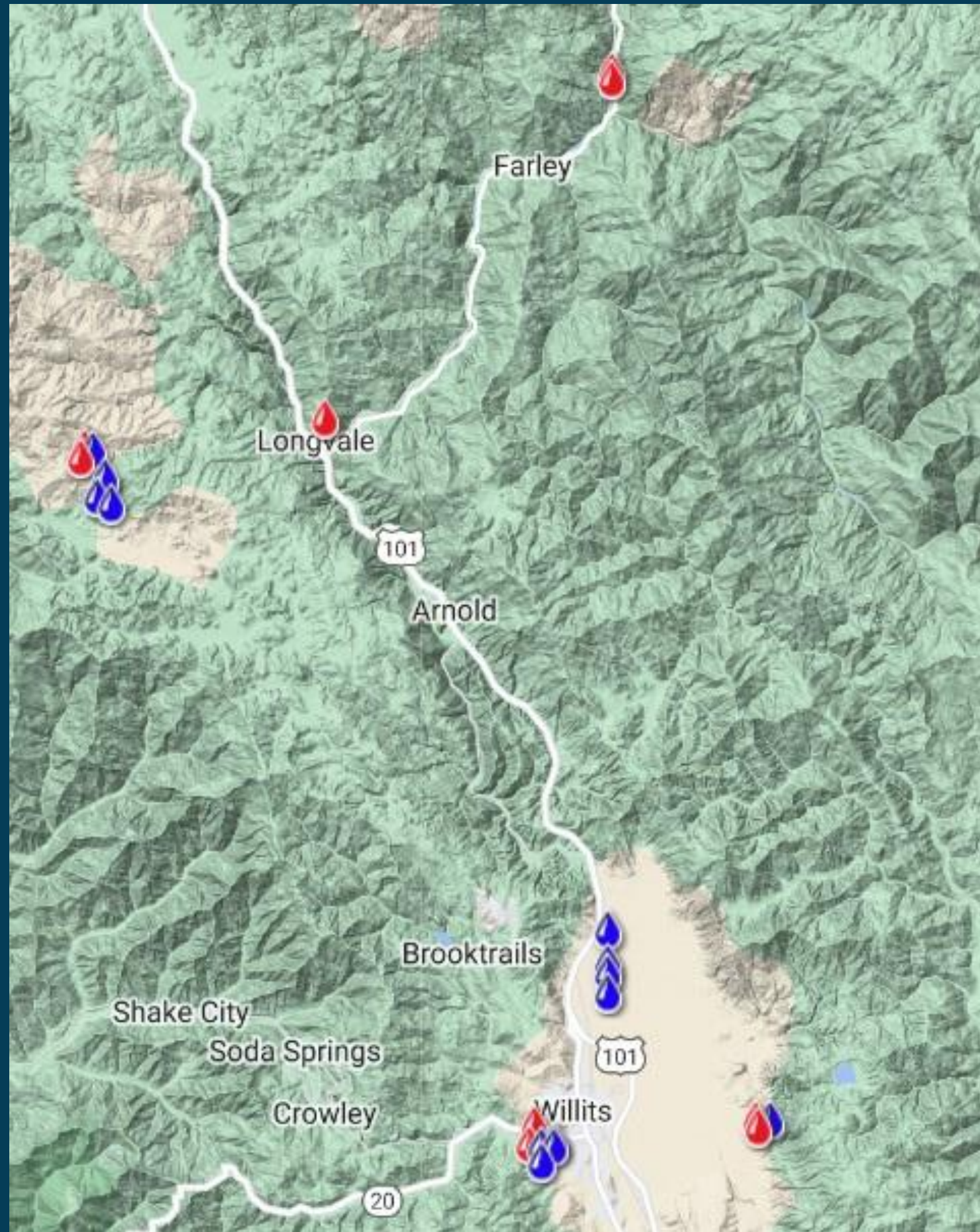
EEL RIVER ESTUARY
Salmonid Restoration Conference
Salmon Habitat Restoration Tour

THRESHOLD EXCEEDENCES

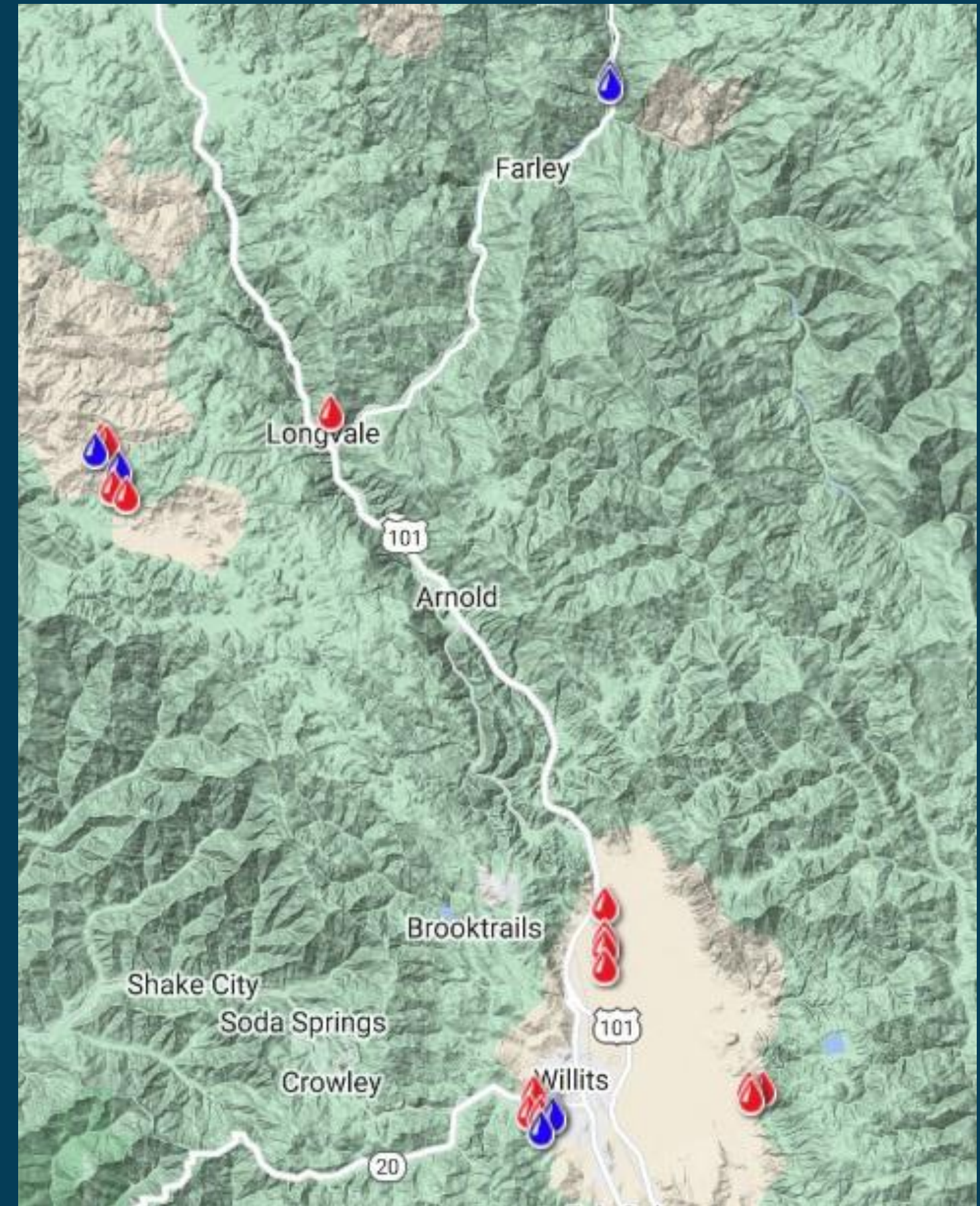


Thresholds	Lower	Upper	Unit
Dissolved Oxygen	79	120	%
pH	6	9	
Specific Conductance	0	500	uS/cm
Temperature	4	21	C
Turbidity	-0.01	20	NTU
Phosphorous	0	0.5	NTU

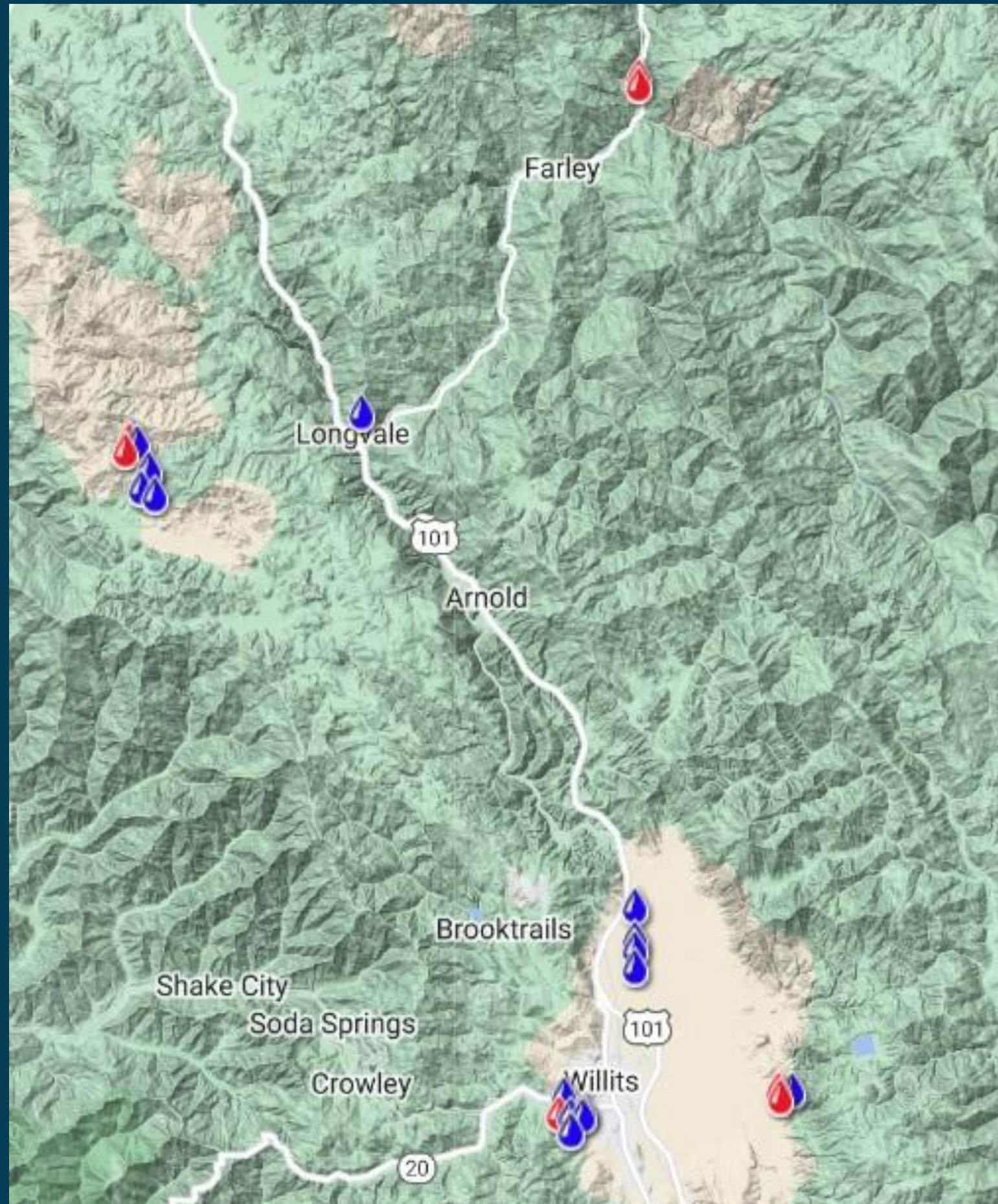
TEMPERATURE



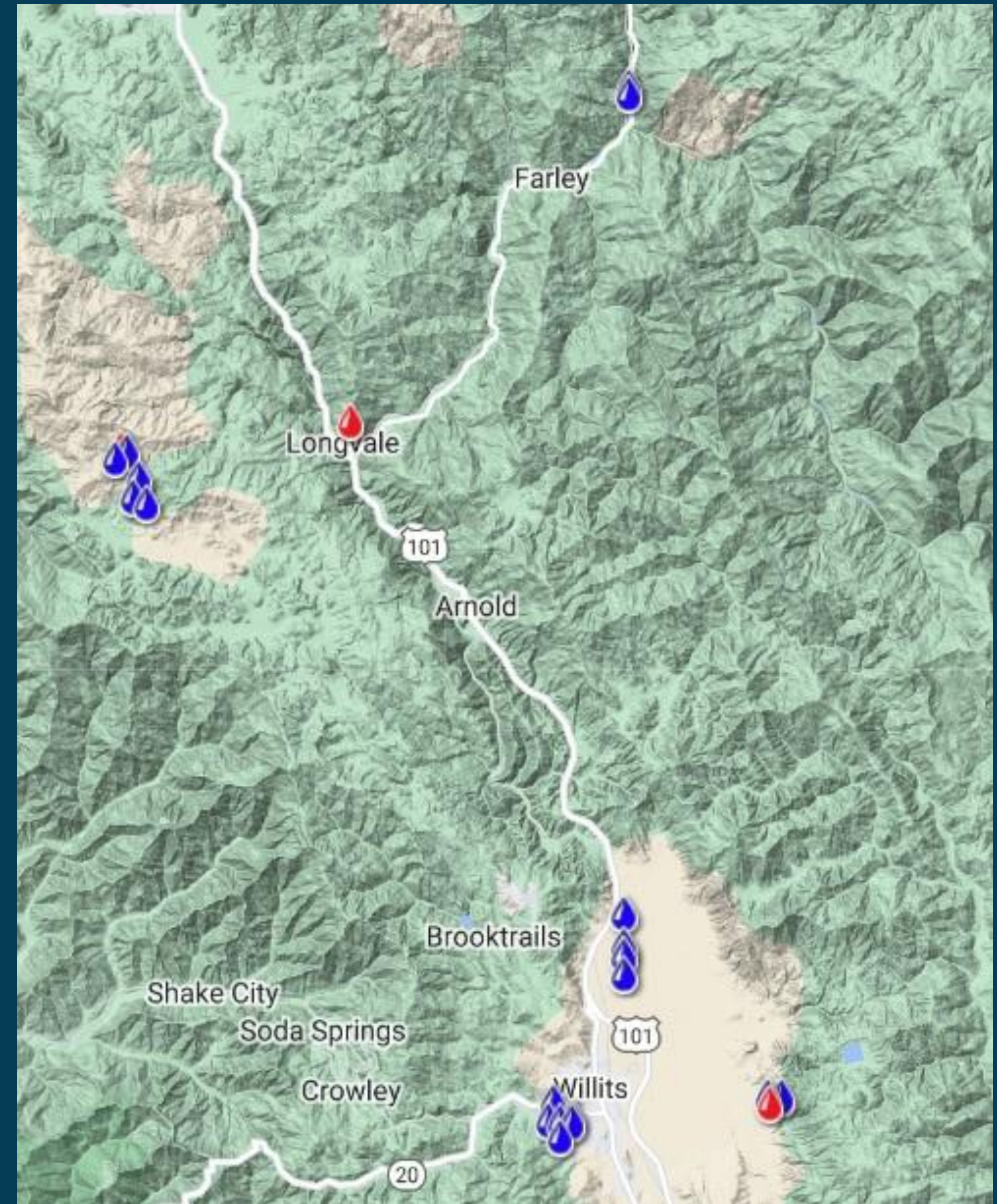
DISSOLVED OXYGEN



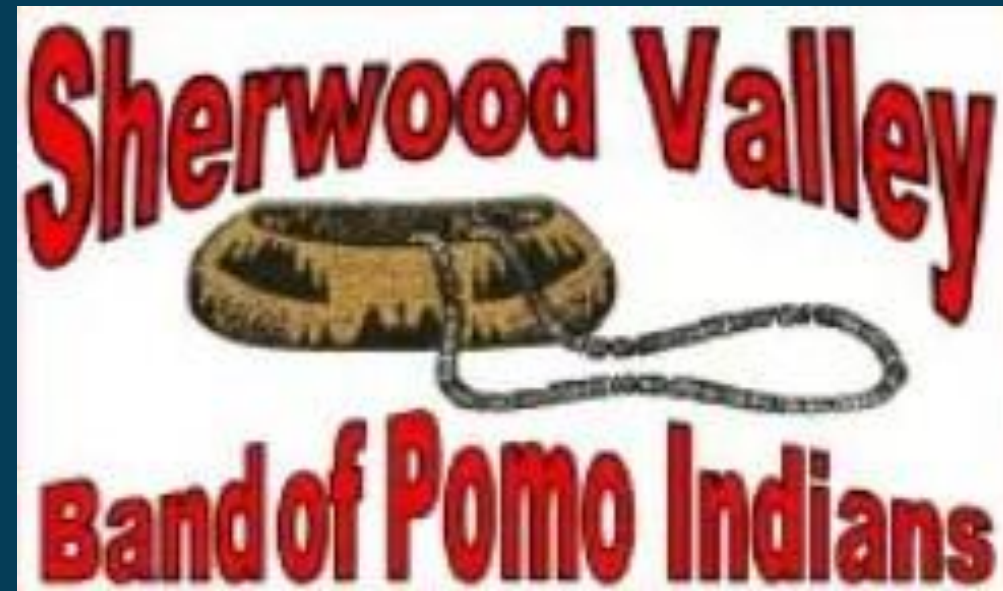
TURBIDITY



CONDUCTIVITY



We are an Eel River Tribe!



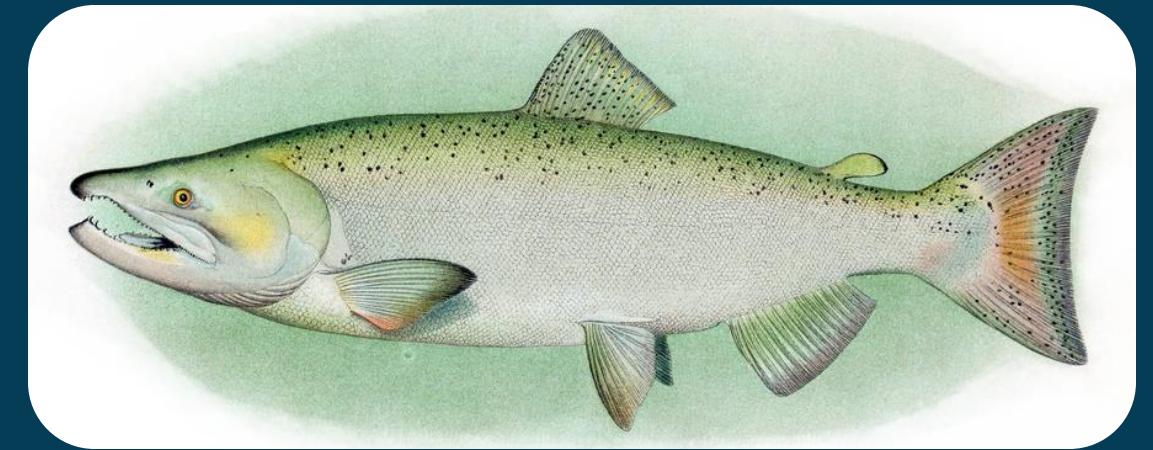
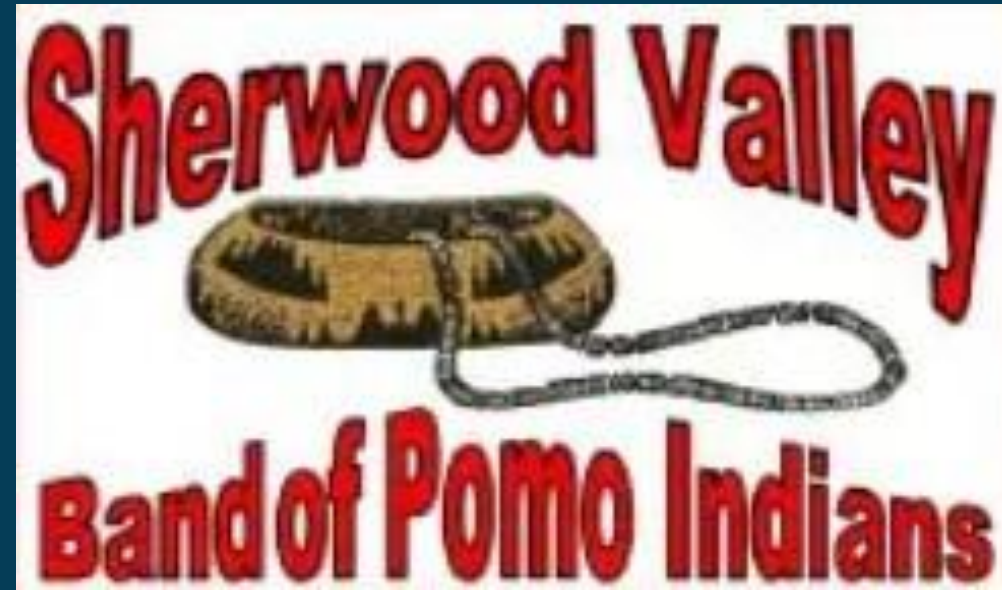
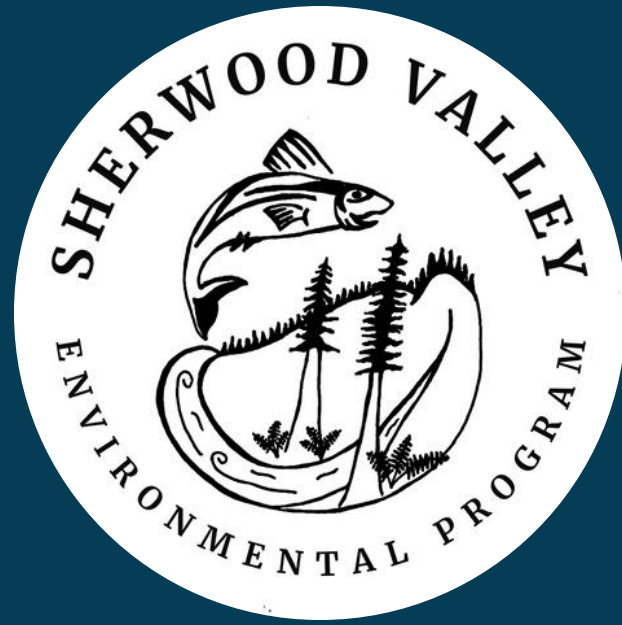
We rely on Eel River resources for:

- Tradition
- Food
- Medicine
- Baskets
- Connection



Moving Forwards

- Collaboration
- Tribal Beneficial Uses
- Habitat Restoration



Environmental Director

Anna FarPorte

afarporte@sherwoodband.com

Environmental Assistant

Shayna Williams

swilliams@sherwoodband.com

Water Technician

Ethan Henthorne

ehenthorne@sherwoodband.com